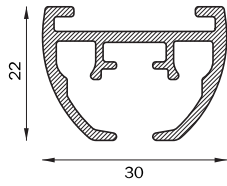


# 5600

## profile

**5600**

492 gr/m



## bending

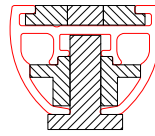
radius

R 20 (1015)

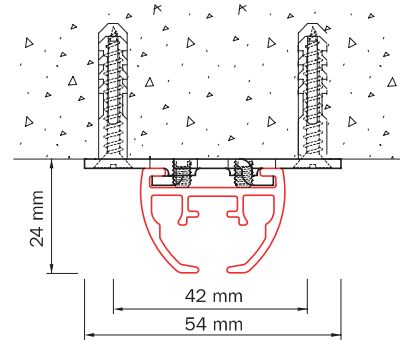
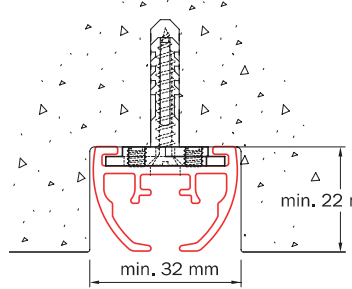
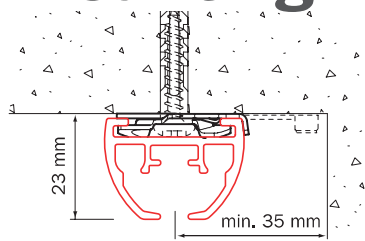
R 30 (1015)

R >100 (1018)

filler position



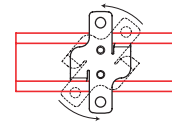
## Mounting



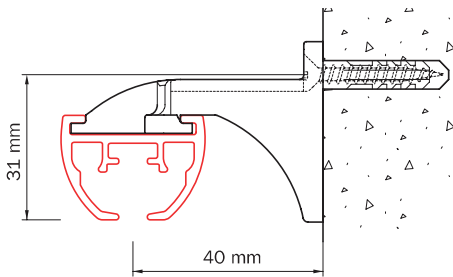
ceiling mounting with ceiling mounting clamp 6050: leave space to allow rotation of ceiling mounting clamp

recessed mounting to or in ceiling with bracket 6055-2000  
 - when mounting in ceiling, take into account the wider pulleys  
 - curved systems: bend profile first then use as template for the rebate  
 - pre-drilling of profile by Goelst NL

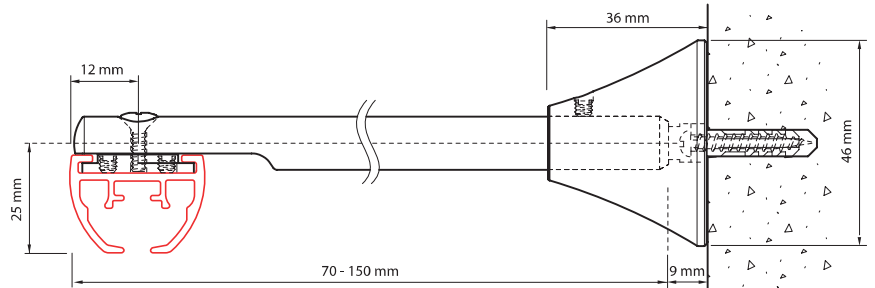
ceiling mounting with ceiling bracket 6055-1000



assembly:  
rotate in place and secure



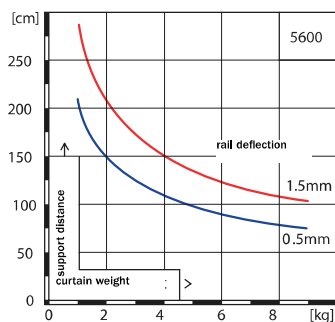
wall mounting with wall bracket 6051



wall mounting with trimmable extension bracket 6017

## G-Standard

5600



## Exploded view

5600

